

Fig. 67-3/4

Arrangement of bracket with Auxiliary Fuse Box

- | | |
|----------------------------------|-----------------------|
| 2 - Cable to Add'l Aux. Fuse Box | 6 - Sheet Metal Screw |
| 3 - Bracket | 7 - Spring Washer |
| 4 - Fuse Box | 8 - Hex Nut |
| 5 - Fuse 16A | |

26. Ground electrical wire #4 to the vehicle Frame by mounting it onto the existing ground post with the Grounding hardware visible behind the rear "left" side B-Pillar panel.

27. Disassemble the 2-pin connecting coupler from the wiring harness (2) and slide the electrical cable through the hole in the rear "left" side B-Pillar panel (21). Then screw the B-Pillar cover panel (21) back in place and re-assemble the 2-pin connector by snapping them back together (Fig. 67-3/6).

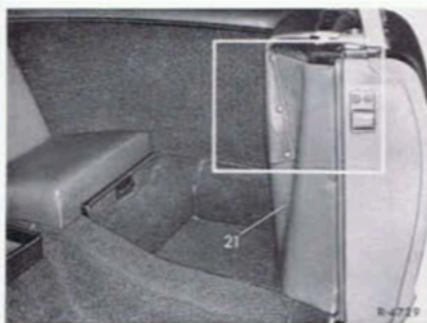


Fig. 67-3/5

Arrangement of Rear B-Pillar Left Panel

- 21 - Panelling, B-Pillar

67-3/4



Fig. 67-3/6

Arrangement of Electrical Connector at Rear B-Pillar panel.

- 2 - Cable to Two-Gang Pole Connector 21 - Upholstered Panelling

28. If necessary, cutout the bottom front of the wooden center console tray (a) 20mm wide and 75mm long (37.5mm from center to left and right) to allow the feed of the electrical cable to the defrost switch (Figure 67-3/7).

29. Install the switch (13) into the Bracket (16) using the washer (20), escutcheon (14) and knob (15) (Figure 67-3/8).

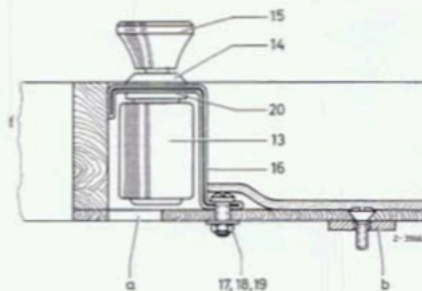


Fig. 67-3/7

Arrangement of Switch in Wooden Center Console Tray

- a - Section Cutout 20x75mm long
b - Pressboard Strips 25x90mm

- | | |
|-----------------------|--------------------|
| 13 - Push/Pull Switch | 17 - Machine Screw |
| 14 - Escutcheon | 18 - Washer |
| 15 - Knob | 19 - Hex Nut |
| 16 - Bracket | 20 - Washer |