

W113 Hardtop Side Window Install

- Factory workbook instructions on the ¼ glass installation are inadequate
- The minimal word count of the factory instructions don't describe the effort and technique required
- Looking on-line, comprehensive assembly instructions do not exist
- The following method involves the use of simple hand tools and clamping fixtures and should be used with caution.

W113 Hardtop Side Window Install

Big Blue Book instructions (all)

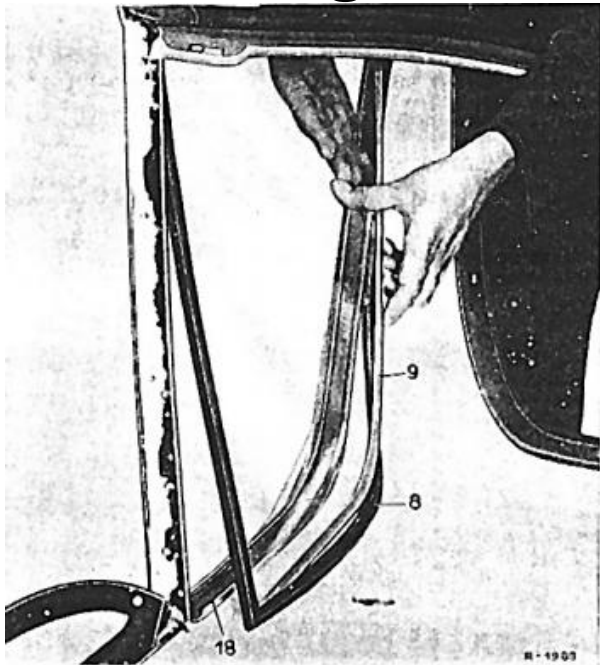


Fig. 79-10/7

8 Rubber molding
9 Window glass
18 Sealing rail

10. Install the window glass (9) together with the rubber molding (8) from below, push it upward as far as it will go, and lift it over the ledge of the sealing rail (18) by means of a flat wooden or plastic wedge applied at the point marked B (Figs. 79-10/8, 7 and 6).

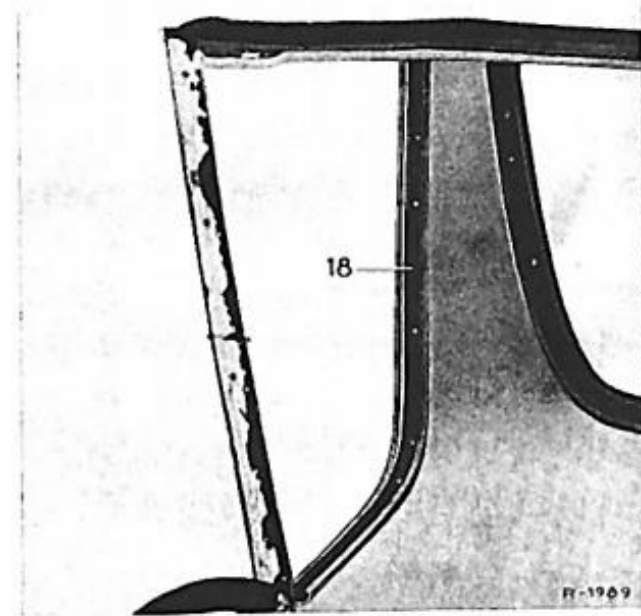


Fig. 79-10/8

13 Sealing rail

11. If the rubber molding (8) should have been displaced during the operation move it into its proper position. Push the window glass toward the outside as far as it will go and install the window reveal moldings (22) and (23) (Fig. 79-10/5).

W113 Hardtop Side Window Install

Preparation steps:

- Move hardtop into it's upright position
- Install weatherstripping around the perimeter of the rear quarter glass with the lip in facing out
- Clear lower gutter of all foreign material
- Use suitable assembly lubricant (P-80) to all rubber edges

W113 Hardtop Side Window Install

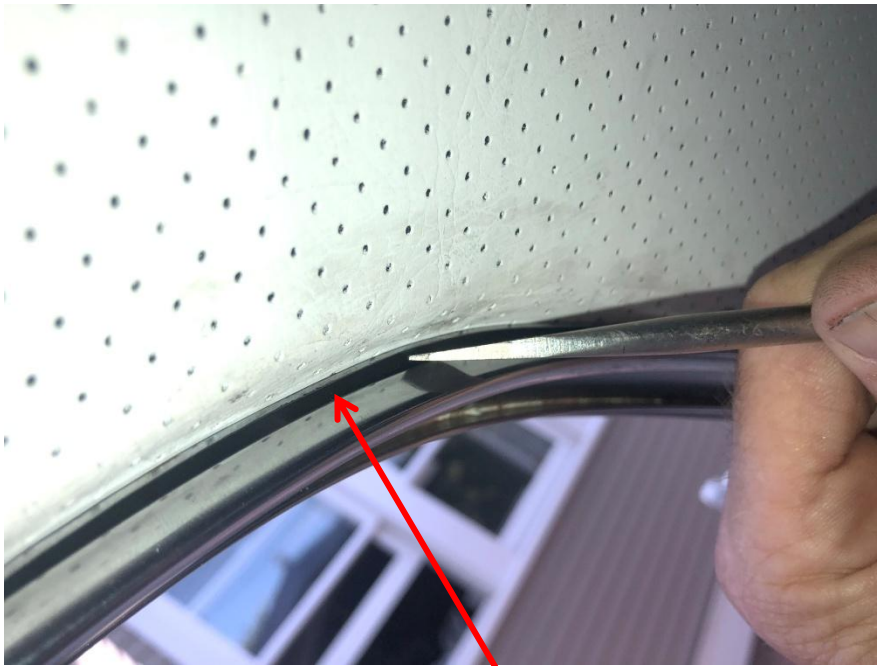
Window frame
preparation



Clean out gutter so lower gasket is flush to the lower metal window frame.
This involves cutting away all excess leather or vinyl

W113 Hardtop Side Window Install

More preparation steps before placing glass



Ensure that chrome trip is tightly fastened against the hardtop steel frame. Screwdriver tip is highlighting unacceptable air gap



This upper chrome trim has to be *very tightly* fastened to the steel window frame. Make sure all four screws are fully fastened and clamp the chrome trim tight to the ceiling.

W113 Hardtop Side Window Install

- ¼ glass with weatherstripping has to be forced inside the chrome frame
- Therefore, chrome upper frame must be totally flush to the hardtop ceiling (no air gaps)
- Lower gutter has to be clear of all leather or vinyl trim
- Apply P-80 assembly lubricant to all rubber edges



W113 Hardtop Side Window Install

- Ignore BBB, move Hardtop into upright position



Tuck glass & weatherstripping into bottom edge. Ensure it fully seated along the bottom edge



¼ window gaskets are 'handed' with a Right & Left orientation. Make sure molded lip on each gasket is facing out

W113 Hardtop Side Window Install



Place a wood block on the inside top corner of the quarter window. Place a protected stick across the outside chrome trim as show. Place "C" clamp across both and apply light clamping pressure on glass along to edge.

Again, light clamping pressure



"C" clamp will hold glass in position allowing You to 'work' the weatherstripping on the inside, along the rear most curve.

W113 Hardtop Side Window Install

Use thin plastic wedges to move the rubber over the chrome edge



Begin at the lower trailing (rear most corner), moving upward, place the wedge in the gutter of the chrome trim. Pull the wedge forward to slowly move the glass into gutter

This technique will move the top edge of the glass outward and into the center of chrome trim. Move slowly and the glass will drop into position. Congrats. You are in.

Install packing material and install 3 perimeter chrome trim pieces